



**Brunswick Gardens, W8**

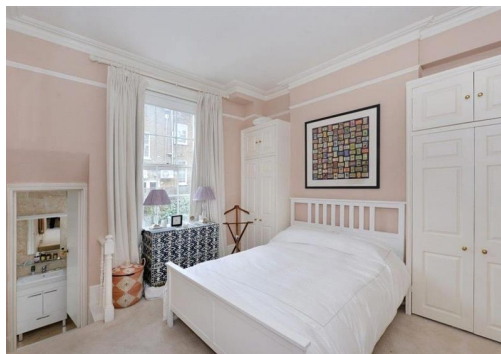
## Brunswick Gardens, W8

A stunning one bedroom apartment set on the first floor of this Victorian building with a terrace at the rear.

Brunswick Gardens is one of the most desirable street in Kensington, moments away from the many shops, bars and restaurants of Notting Hill and Kensington. Hyde Park is also within walking distance. The nearest underground station is Notting Hill Gate.

One Double Bedroom, Wooden Floors, High Ceilings, Private Terrace & Balcony

**Asking price: £575**



020 7096 9476

contact@landstones.co.uk

Whilst every effort is made to ensure the accuracy of these details, it should be noted that the measurements are approximate only. Floorplans are for representation purposes only and prepared according to the RICS Code of Measuring Practice by our floorplan provider. Therefore, the layout of doors, windows and rooms are approximate and should be regarded as such by any prospective tenant.