



Gledhow Gardens, SW5

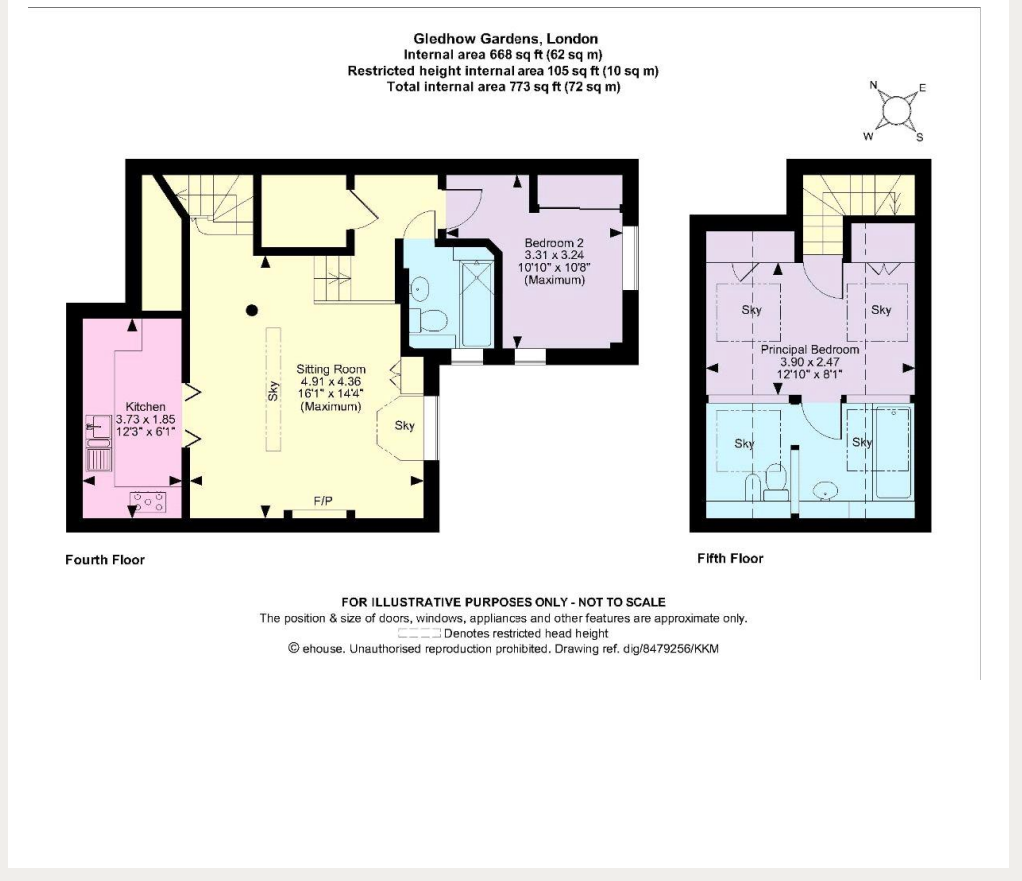
Gledhow Gardens, SW5

An incredibly bright top floor two bedroom apartment with wonderful quiet views overlooking some greenery set within this beautiful red brick Victorian building in the heart of South Kensington.

Gledhow Gardens is enviably located just moments from the many shops, bars and eateries of South Kensington, and within easy reach of the green spaces of Hyde Park. The nearest stations are Gloucester Road and South Kensington.

Two Bathrooms, Two Double Bedrooms, Access To Communal Gardens, Balcony

Asking price: £750



020 7096 9476

contact@landstones.co.uk

Whilst every effort is made to ensure the accuracy of these details, it should be noted that the measurements are approximate only. Floorplans are for representation purposes only and prepared according to the RICS Code of Measuring Practice by our floorplan provider. Therefore, the layout of doors, windows and rooms are approximate and should be regarded as such by any prospective tenant.