

**Finborough Road, SW10**

**£550 pw**

**LET**

A modern two double bedroom apartment set on the garden level in this Chelsea Victorian conversion townhouse.

**020 7096 9476**

[contact@landstones.co.uk](mailto:contact@landstones.co.uk)

**LANDSTONES**

A modern two double bedroom apartment set on the garden level in this Chelsea Victorian conversion townhouse.

Finborough Road is set in a convenient and sought after location being less than half a mile from Earl's Court underground station (District and Piccadilly lines) and the shops, restaurants and cafe's of both Chelsea and Earls Court. The property is a short walk from the conveniences of the Fulham and Kings Road.

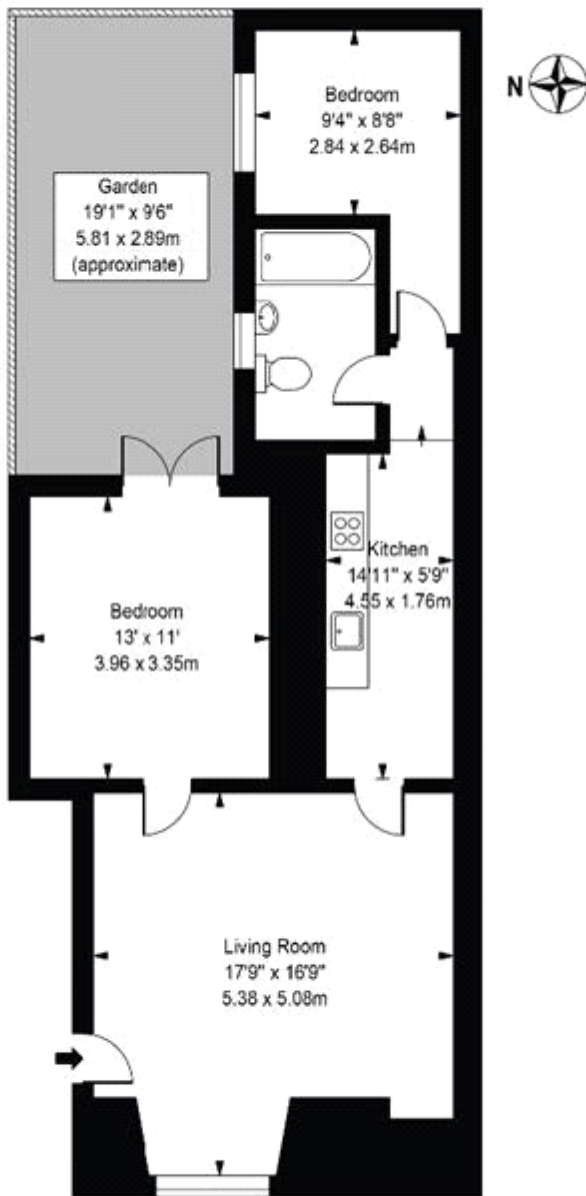






# Finborough Road

Approx. Gross Internal Area 735 Sq Ft - 68.33 Sq M



Ground Floor

For Illustration Purposes Only - Not To Scale

This floor plan should be used as a general outline for guidance only and does not constitute in whole or in part an offer or contract. Any intending purchaser or lessee should satisfy themselves by inspection, searches, enquiries and full survey as to the correctness of each statement. Any areas, measurements or distances quoted are approximate and should not be used to value a property or be the basis of any sale or let.



Energy Efficiency Rating		
	Current	Potential
Very energy efficient - lower running costs		
(92-100) <b>A</b>		
(81-91) <b>B</b>		
(69-80) <b>C</b>		
(55-68) <b>D</b>		68
(39-54) <b>E</b>	45	
(21-38) <b>F</b>		
(1-20) <b>G</b>		
Not energy efficient - higher running costs		
England & Wales		EU Directive 2002/91/EC

The energy efficiency rating is a measure of the overall efficiency of a home. The higher the rating the more energy efficient the home is and the lower the fuel bills will be.

Whilst every effort is made to ensure the accuracy of these details, it should be noted that the measurements are approximate only. Floorplans are for representation purposes only and prepared according to the RICS Code of Measuring Practice by our floorplan provider. Therefore, the layout of doors, windows and rooms are approximate and should be regarded as such by any prospective tenant.