



William Morris Way, SW6

£550 pw

A bright two double bedroom apartment situated in this superb riverside development within touching distance of Chelsea Harbour boasting views over the river Thames.

Lift Access | Sixth Floor | 24/7 Porter | Secure Underground Parking |

020 7096 9476

contact@landstones.co.uk

A bright two double bedroom apartment situated in this superb riverside development within touching distance of Chelsea Harbour boasting views over the river Thames.

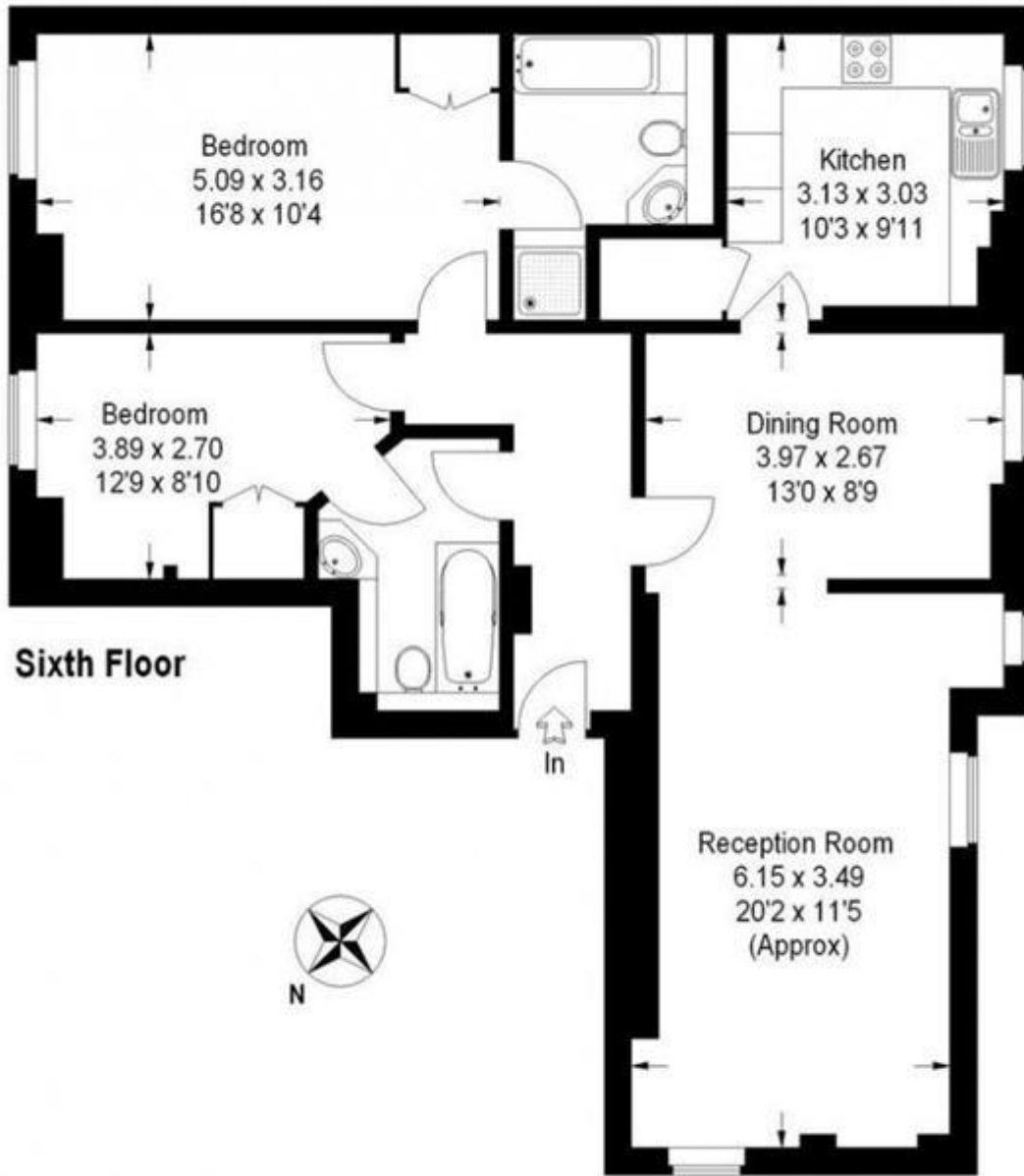
Located in the Sands End area of Fulham, the property is within walking distance of Harbour Club gym and the amenities of Wandsworth Bridge Road. Fulham Broadway, Fulham Road, King's Road and Chelsea are also nearby with their choice of boutiques, bars and restaurants.





William Morris Way

Approximate Gross Internal Area :- 91 sq m / 979 sq ft



This plan is for layout guidance only. Not drawn to scale unless stated. Windows & door openings are approximate. Whilst every care is taken in the preparation of this plan, please check all dimensions, shapes & compass bearings before making any decisions reliant upon them. (ID19690)



Energy Efficiency Rating			Environmental Impact (CO ₂) Rating		
	Current	Potential		Current	Potential
Very energy efficient - lower running costs			Very environmentally friendly - lower CO ₂ emissions		
(92-100) A			(92-100) A		
(81-91) B			(81-91) B		
(69-80) C			(69-80) C		
(55-68) D			(55-68) D		
(39-54) E			(39-54) E		
(21-38) F			(21-38) F		
(1-20) G			(1-20) G		
Not energy efficient - higher running costs			Not environmentally friendly - higher CO ₂ emissions		
England & Wales	EU Directive 2002/91/EC		England & Wales	EU Directive 2002/91/EC	
	82	85		83	87

The energy efficiency rating is a measure of the overall efficiency of a home. The higher the rating the more energy efficient the home is and the lower the fuel bills will be.

The environmental impact rating is a measure of a home's impact on the environment in terms of carbon dioxide (CO₂)

Whilst every effort is made to ensure the accuracy of these details, it should be noted that the measurements are approximate only. Floorplans are for representation purposes only and prepared according to the RICS Code of Measuring Practice by our floorplan provider. Therefore, the layout of doors, windows and rooms are approximate and should be regarded as such by any prospective tenant.