



Brunswick Gardens, W8

£675 pw

A brand new refurbished one bedroom apartment set on the ground floor of this period building located in the heart of Kensington.

Brand New Refurbished | High Ceilings & Wood Floors | Quiet Street | Separate Kitchen |

020 7096 9476
contact@landstones.co.uk

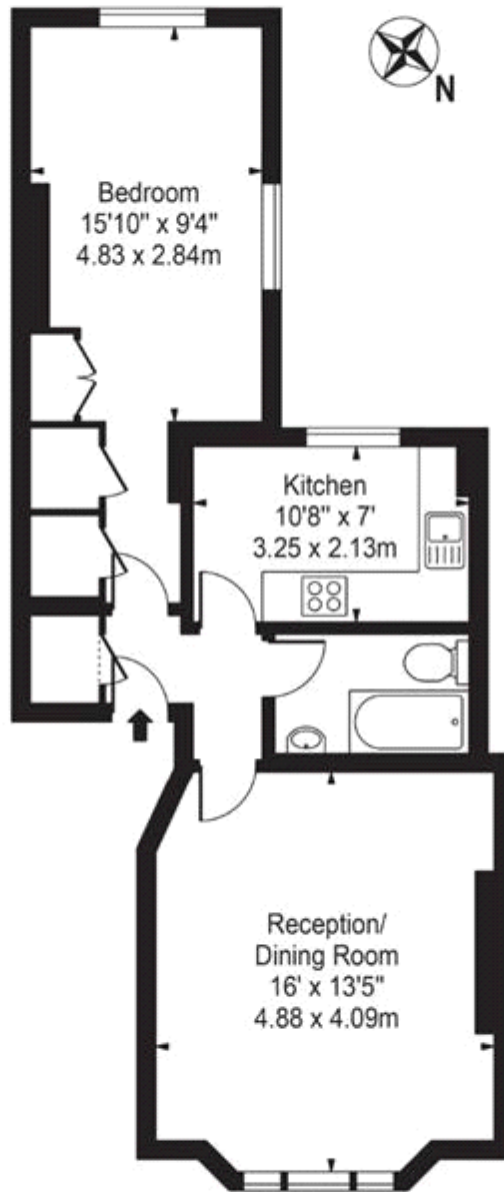
 **LANDSTONES**

A brand new refurbished one bedroom apartment set on the ground floor of this period building located in the heart of Kensington.

Brunswick Gardens is one of the most desirable street in Kensington, moments away from the many shops, bars and restaurants of Notting Hill and Kensington. Hyde Park is also within walking distance. The nearest underground station is Notting Hill Gate.

Brunswick Gardens

Approx. Gross Internal Area 570 Sq Ft - 52.95 Sq M



Ground Floor

For Illustration Purposes Only - Not To Scale

This floor plan should be used as a general outline for guidance only and does not constitute in whole or in part an offer or contract. Any intending purchaser or lessee should satisfy themselves by inspection, searches, enquiries and full survey as to the correctness of each statement. Any areas, measurements or distances quoted are approximate and should not be used to value a property or be the basis of any sale or let.



Energy Efficiency Rating		
	Current	Potential
Very energy efficient - lower running costs		
(92-100) A		
(81-91) B		
(69-80) C		
(55-68) D		
(39-54) E		
(21-38) F		
(1-20) G		
Not energy efficient - higher running costs		
		74 76
England & Wales		EU Directive 2002/91/EC

The energy efficiency rating is a measure of the overall efficiency of a home. The higher the rating the more energy efficient the home is and the lower the fuel bills will be.

Whilst every effort is made to ensure the accuracy of these details, it should be noted that the measurements are approximate only. Floorplans are for representation purposes only and prepared according to the RICS Code of Measuring Practice by our floorplan provider. Therefore, the layout of doors, windows and rooms are approximate and should be regarded as such by any prospective tenant.