



**Earl's Court Square, SW5**



## Earl's Court Square, SW5

A spacious and modern lateral two double bedroom apartment set on the second floor (with lift) within this beautiful red brick mansion block.

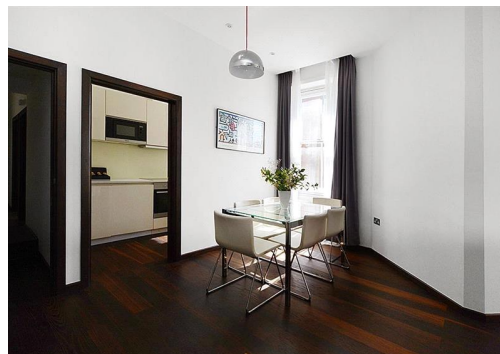
Earl's Court Square is an award winning garden square, minutes away from the many shops and local amenities found on Earls Court Road. The closest tube station is literally two minute away at Earls Court (Piccadilly and District Line).

Council Tax Band: F

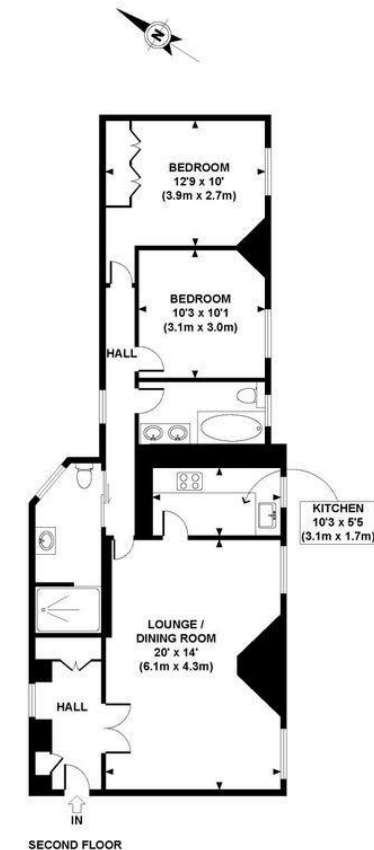
Deposit: £3,625

High Ceilings & Wood Floors, Communal Garden, Lift Access, Porter

**Asking price: £725**



Langham Mansions, SW5



APPROX. GROSS INTERNAL FLOOR AREA 901 SQ FT / 83.7 SQ M

Whilst every attempt has been made to ensure the accuracy of this floor plan, measurements of doors, windows, rooms and all other items are approximate. No responsibility is taken for any error, omission or mis-statement. This floor plan is for illustrative purposes only, and should be treated as such.

020 7096 9476

contact@landstones.co.uk

Whilst every effort is made to ensure the accuracy of these details, it should be noted that the measurements are approximate only. Floorplans are for representation purposes only and prepared according to the RICS Code of Measuring Practice by our floorplan provider. Therefore, the layout of doors, windows and rooms are approximate and should be regarded as such by any prospective tenant.