



Rosary Gardens, SW7

Rosary Gardens, SW7

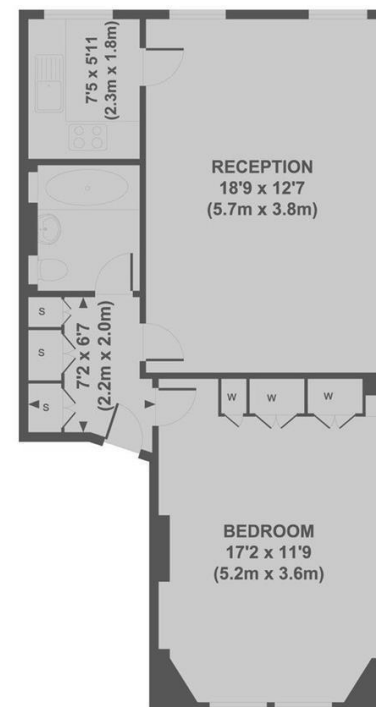
A bright one bedroom apartment situated on the second floor of a handsome red brick Victorian conversion on a desired street in South Kensington.

Rosary Gardens is ideally located to enjoy the fantastic local amenities that the area has to offer and the brilliant transport links with both South Kensington and Gloucester Road underground stations (Circle, District and Piccadilly) within walking distance.

Council Tax Band: F

Deposit: £3,250

Asking price: £650



SECOND FLOOR

TOTAL APPROX. FLOOR AREA 586 SQ.FT. (54 SQ.M)

020 7096 9476

contact@landstones.co.uk

Whilst every effort is made to ensure the accuracy of these details, it should be noted that the measurements are approximate only. Floorplans are for representation purposes only and prepared according to the RICS Code of Measuring Practice by our floorplan provider. Therefore, the layout of doors, windows and rooms are approximate and should be regarded as such by any prospective tenant.