



Vicarage Gate, W8

Vicarage Gate, W8

This contemporary house has been meticulously designed offering impressive entertaining space and a wonderful sense of volume and light making it the perfect family home.

Vicarage Gate is superbly located just off Kensington Church Street and close to the many amenities, shops, health clubs, bars and restaurants of both Kensington High Street and Notting Hill Gate. Kensington Gardens is less than a 5 minute walk away, which leads into Hyde Park. The Royal Albert Hall is also within walking distance.

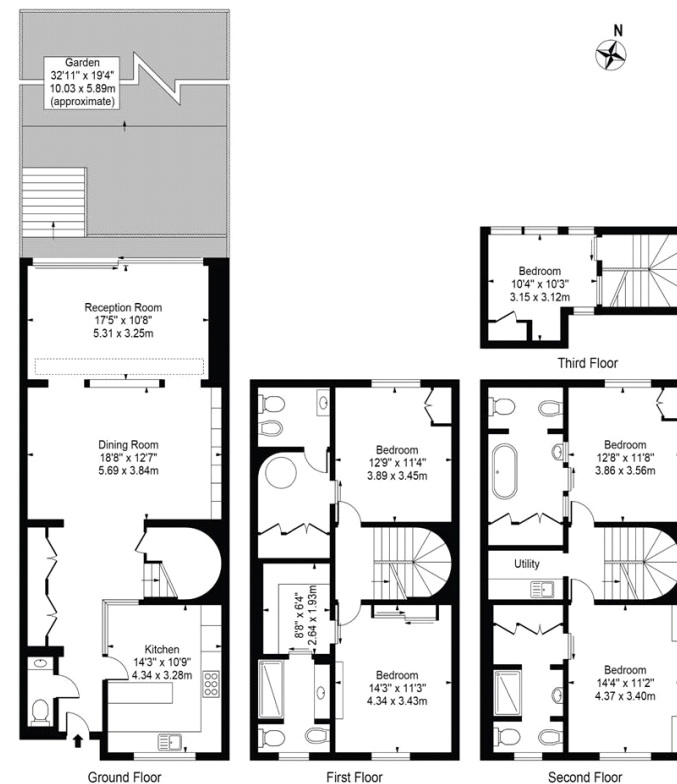
Council Tax Band: H
Deposit: £40,000

Asking price: £30,000



Vicarage Gate

Approx. Gross Internal Area 2286 Sq Ft - 212.38 Sq M



For Illustration Purposes Only - Not To Scale

This floor plan should be used as a general outline for guidance only and does not constitute in whole or in part an offer or contract. Any intending purchaser or lessee should satisfy themselves by inspection, searches, enquiries and full survey as to the correctness of each statement. Any areas, measurements or distances quoted are approximate and should not be used to value a property or be the basis of any sale or let.

020 7096 9476

contact@landstones.co.uk

Whilst every effort is made to ensure the accuracy of these details, it should be noted that the measurements are approximate only. Floorplans are for representation purposes only and prepared according to the RICS Code of Measuring Practice by our floorplan provider. Therefore, the layout of doors, windows and rooms are approximate and should be regarded as such by any prospective tenant.