



Harrington Road, SW7

Harrington Road, SW7

Offered on a Short Let basis, this superb, extremely well proportioned penthouse apartment with three bedrooms, three bathrooms, 360 degree terrace, hot tub and far reaching views over London.

Petersham House is situated on Harrington Road between Reece Mews and Bute Street, therefore the apartment is located within close proximity to South Kensington tube station as well as the shops, restaurants and amenities that the area has to offer.

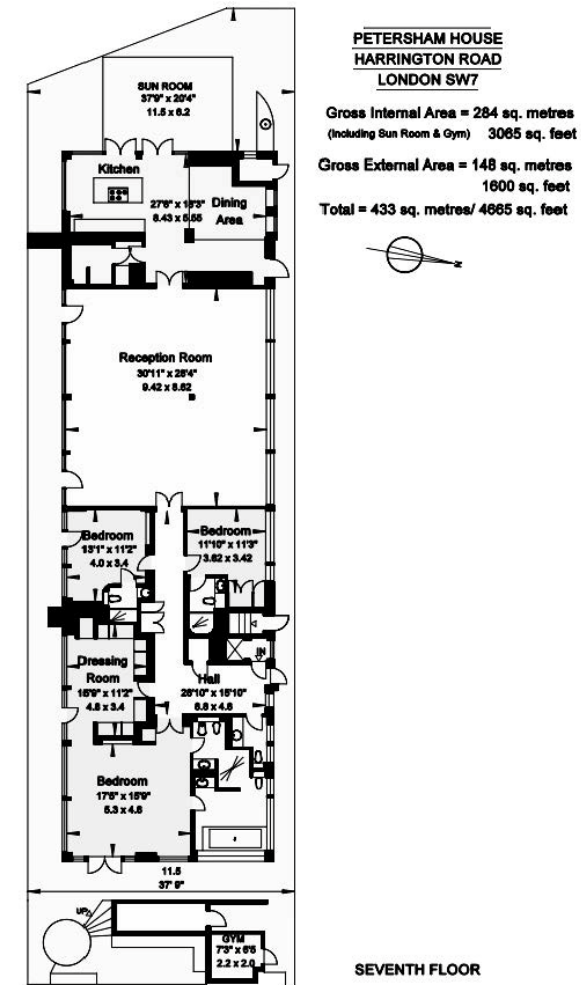
Situated on the seventh floor and covering in excess of 3000ft² including a wraparound decked terrace, this amazing apartment provides panoramic views of South Kensington as well as a multitude of London's iconic landmarks. Finished to exacting detail and providing excellent entertaining space, this apartment is presented in fantastic order. The property provides a superlative level of natural light with uninterrupted views across the capital. Further benefits include generous ceiling height, fabulous storage, dressing rooms and direct lift access.

Entrance hall, reception room, day room, kitchen, dining area, master bedroom suite with dressing area, 2 further bedrooms with en suite shower room, study, utility room, cloakroom, terrace, hot tub, direct lift access, porter, fully integrated Lutron and Crestron system for all lighting, audio visual equipment and curtains

Council Tax Band: H (Kensington and Chelsea)
Deposit: £39,000

All Bills Inclusive , Short Let

Asking price: £6,500



Whilst every effort is made to ensure the accuracy of these details, it should be noted that the measurements are approximate only. Floorplans are for representation purposes only and prepared according to the RICS Code of Measuring Practice by our floorplan provider. Therefore, the layout of doors, windows and rooms are approximate and should be regarded as such by any prospective tenant.

020 7096 9476

contact@landstones.co.uk