



Gilston Road, SW10

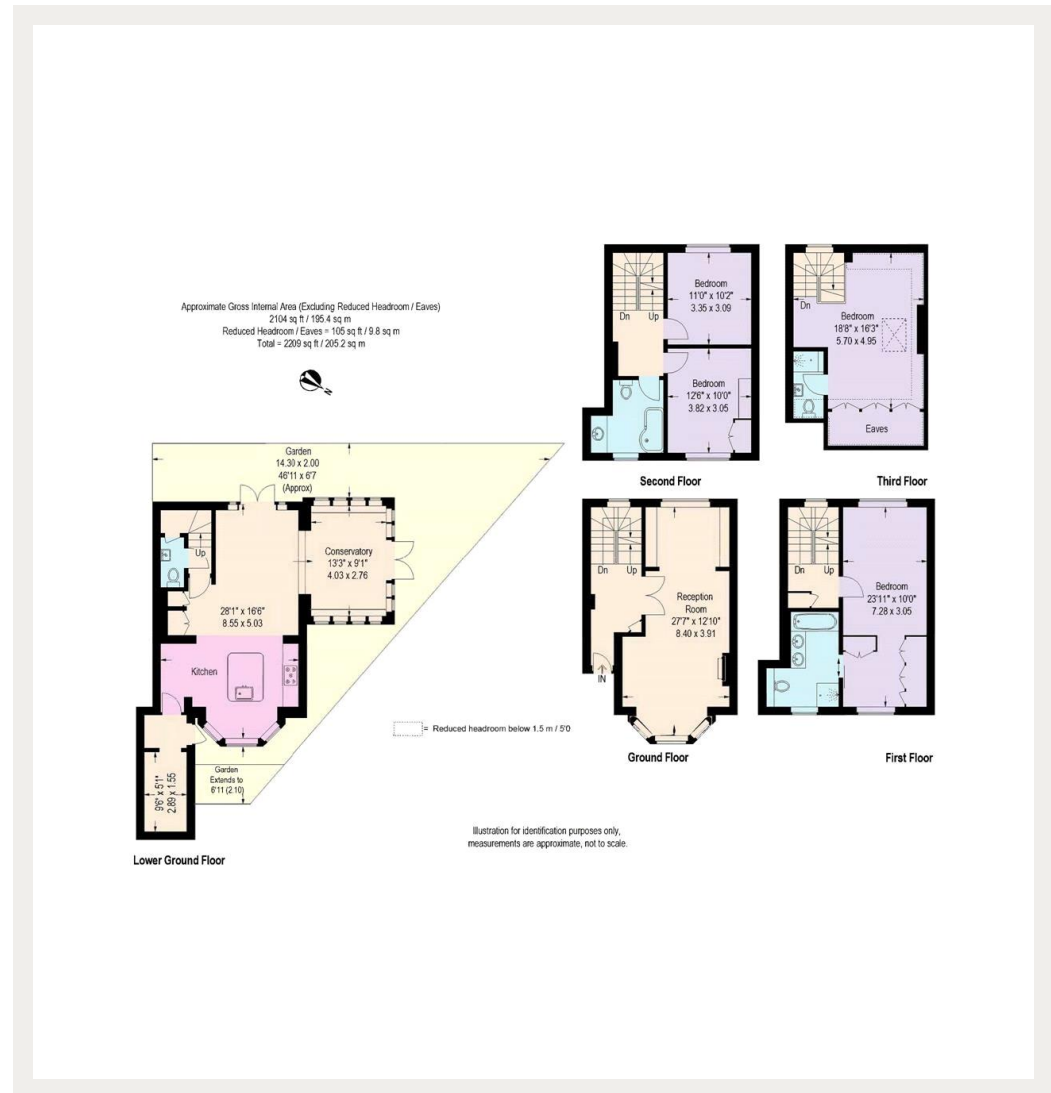
# Gilston Road, SW10

An exceptional family house in the sought-after Boltons Conservation Area.

The house is located within the exclusive Bolton's Conservation Area and is conveniently located for the extensive amenities of Fulham Road and Brompton Road. The house is approximately 100m from the communal gardens of The Boltons, for which it is possible to gain access (by separate negotiation).

Council Tax Band: H  
Deposit: £17,700

Asking price: £2,950



020 7096 9476

contact@landstones.co.uk

Whilst every effort is made to ensure the accuracy of these details, it should be noted that the measurements are approximate only. Floorplans are for representation purposes only and prepared according to the RICS Code of Measuring Practice by our floorplan provider. Therefore, the layout of doors, windows and rooms are approximate and should be regarded as such by any prospective tenant.