



Young Street, W8

Young Street, W8

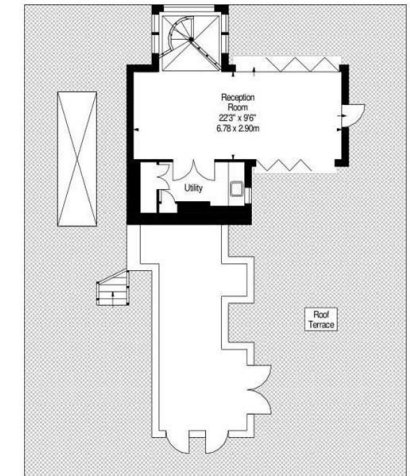
An interior designed & spacious three bedroom penthouse finished to the highest standard within this portered development located in a quiet street off Kensington High Street.

Perfectly positioned in the heart of Kensington with its range of high-street shops, Michelin-starred restaurants, cafes, and lively bars, Hyde Park is also within walking distance. Kensington High Street is the closest underground station.

Council Tax Band: G
Deposit: £39,000

Lift Access, Private Terrace, Porter, Air Conditioning

Asking price: £6,500



Whilst every effort is made to ensure the accuracy of these details, it should be noted that the measurements are approximate only. Floorplans are for representation purposes only and prepared according to the RICS Code of Measuring Practice by our floorplan provider. Therefore, the layout of doors, windows and rooms are approximate and should be regarded as such by any prospective tenant.

020 7096 9476

contact@landstones.co.uk