



**Kempsford Gardens, SW5**

## Kempsford Gardens, SW5

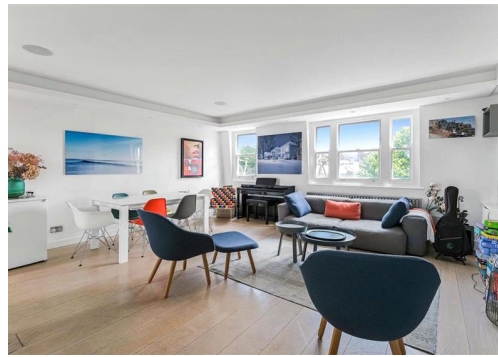
An elegant split level three-bedroom apartment situated on the top floor of this well maintained Victorian conversion building. Presented to a very high standard, the apartment offers plenty of natural light and a private terrace.

Kempsford Gardens is ideally located between West Brompton and Earl's Court tube stations, also moments away from the many shops, bars and restaurants of Earl's Court and Chelsea.

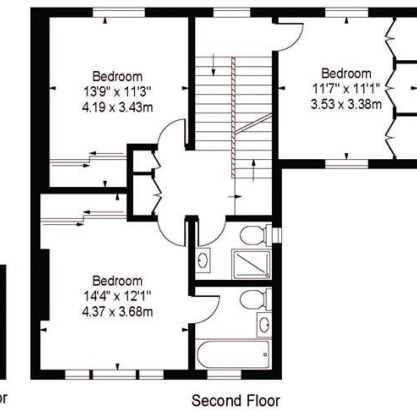
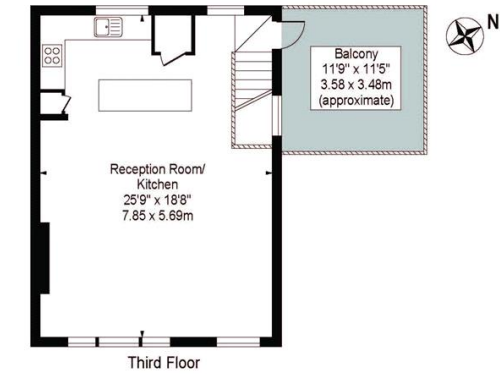
Council Tax Band: D  
Deposit: £7,500

Private roof terrace, Split Level, Top Floor Flat, Wooden Floors

**Asking price: £1,250**



### Kempsford Gardens, SW5 9LA Approx. Gross Internal Area 1318 Sq Ft - 122.44 Sq M



First Floor  
Entrance

For Illustration Purposes Only - Not To Scale

This floor plan should be used as a general outline for guidance only and does not constitute in whole or in part an offer or contract. Any intending purchaser or lessee should satisfy themselves by inspection, searches, enquiries and full survey as to the correctness of each statement. Any areas, measurements or distances quoted are approximate and should not be used to value a property or be the basis of any sale or let.

020 7096 9476

contact@landstones.co.uk

Whilst every effort is made to ensure the accuracy of these details, it should be noted that the measurements are approximate only. Floorplans are for representation purposes only and prepared according to the RICS Code of Measuring Practice by our floorplan provider. Therefore, the layout of doors, windows and rooms are approximate and should be regarded as such by any prospective tenant.