



Cornwall Gardens, SW7

# Cornwall Gardens, SW7

A light, interior designed two bedroom, two bathroom apartment finished to the highest standard set on the top floor within this beautiful period building.

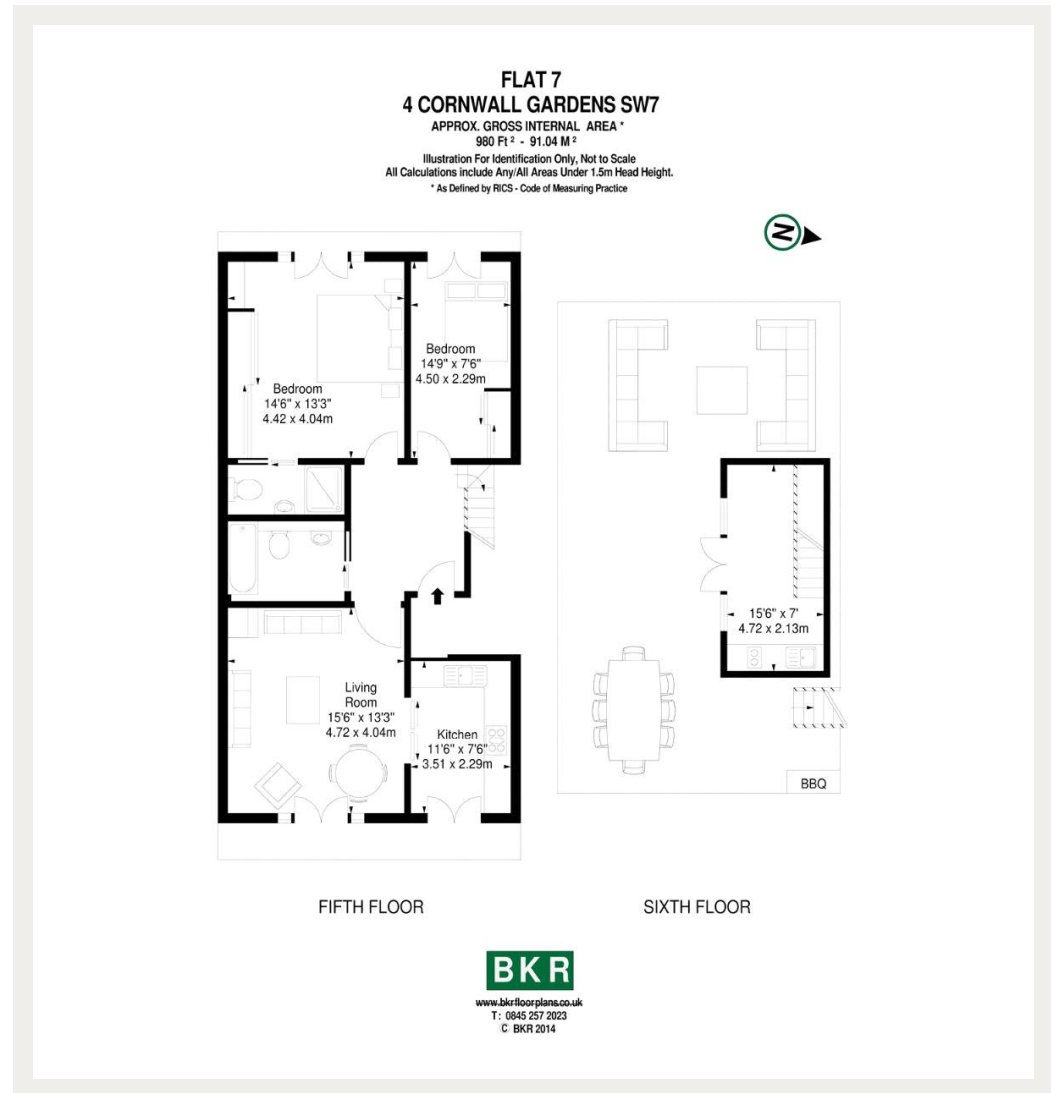
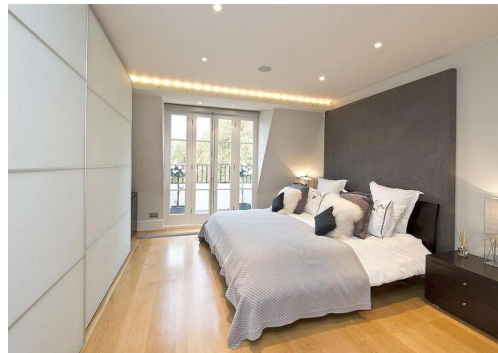
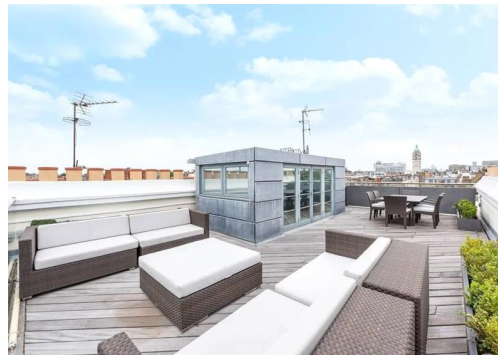
Cornwall Gardens is walking distance from Gloucester Road tube station, as well as all the shops, restaurants and amenities of South Kensington.

Hyde Park is also a short walk away.

Council Tax Band: G  
Deposit: £11,400

Two Double Bedrooms, Two Bathrooms, Wooden Floors, Private Terrace

**Asking price: £1,900**



020 7096 9476

contact@landstones.co.uk

Whilst every effort is made to ensure the accuracy of these details, it should be noted that the measurements are approximate only. Floorplans are for representation purposes only and prepared according to the RICS Code of Measuring Practice by our floorplan provider. Therefore, the layout of doors, windows and rooms are approximate and should be regarded as such by any prospective tenant.