



Balliol Road, W10

Balliol Road, W10

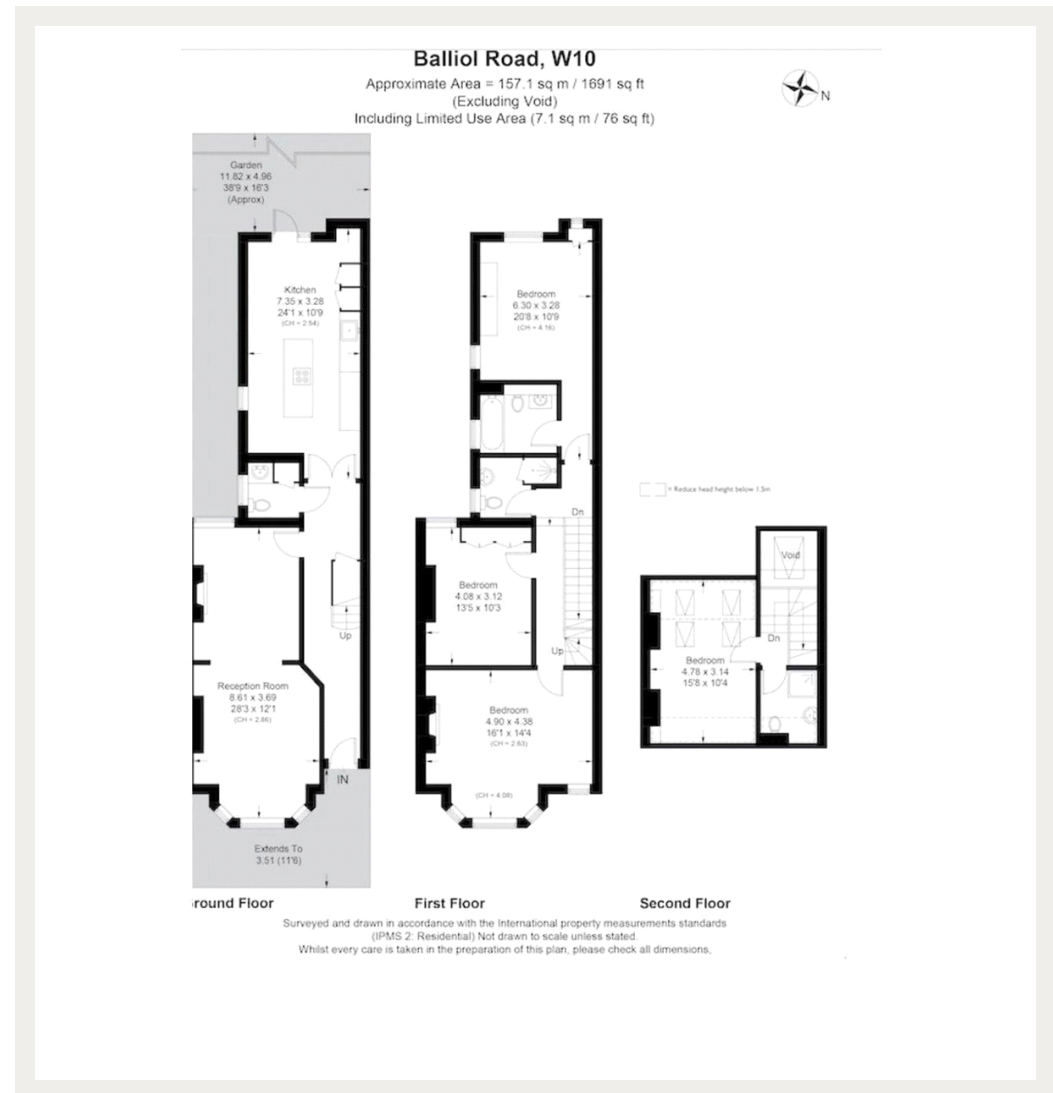
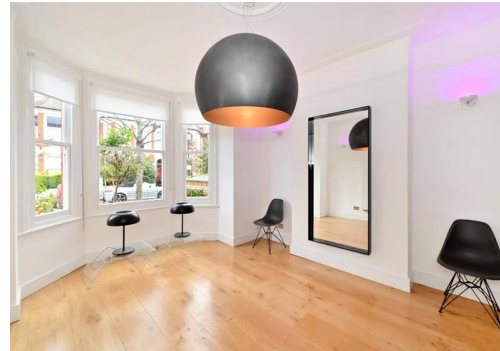
Tucked away on a quiet tree-lined street is this newly refurbished four bedroom family home.

Balliol Road is a pretty tree-lined street, conveniently located for the local shops and boutiques on St Helen's Gardens. Latimer Road underground station (Circle, Hammersmith and City lines) is only 0.4 miles away. The fabulous amenities of Westfield, Notting Hill, Portobello Road and Golborne Road are also only a short distance away.

Council Tax Band: G
Deposit: £11,070

Private Garden

Asking price: £1,845



020 7096 9476

contact@landstones.co.uk

Whilst every effort is made to ensure the accuracy of these details, it should be noted that the measurements are approximate only. Floorplans are for representation purposes only and prepared according to the RICS Code of Measuring Practice by our floorplan provider. Therefore, the layout of doors, windows and rooms are approximate and should be regarded as such by any prospective tenant.