



**Thurloe Square, SW7**

# Thurloe Square, SW7

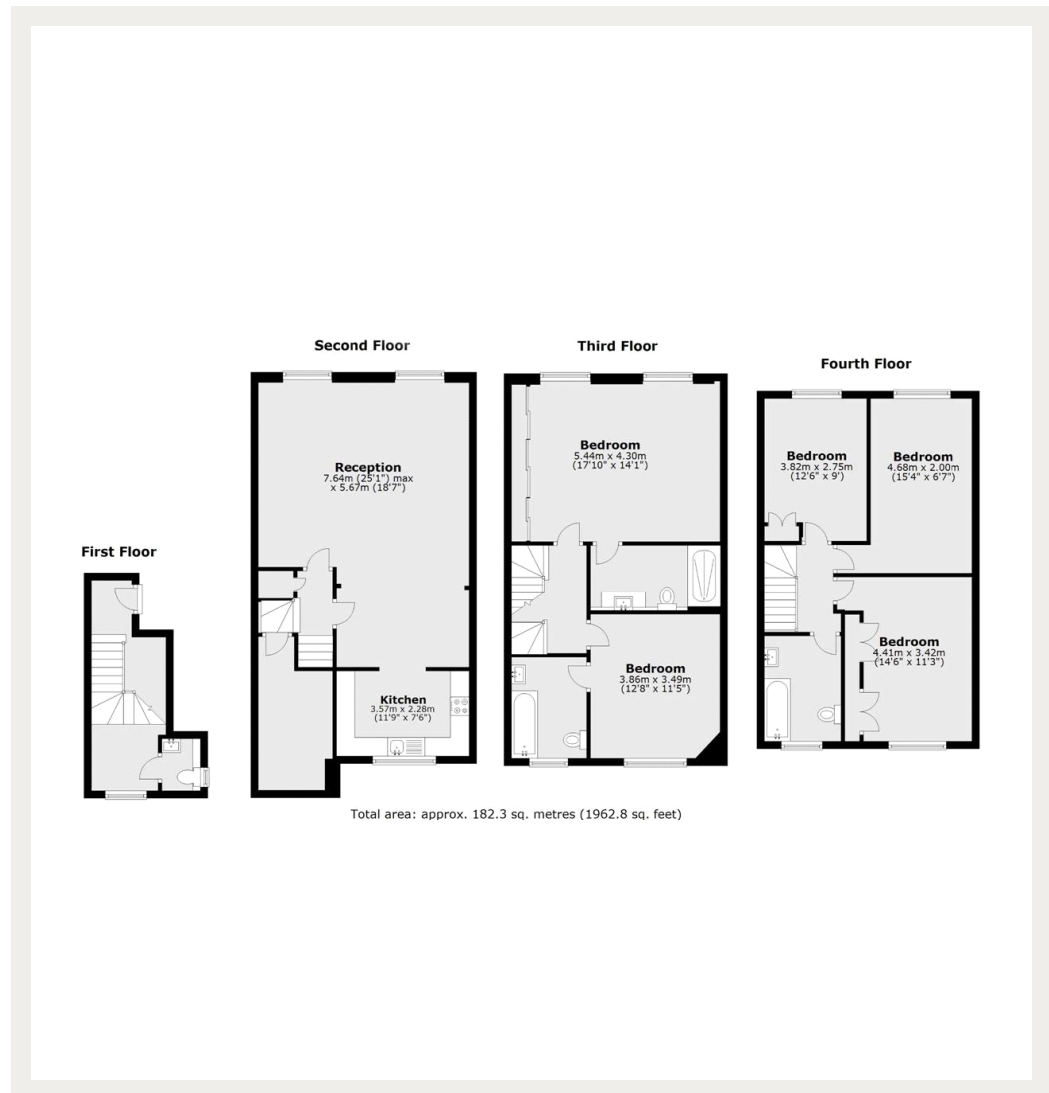
A bright and spacious five-bedroom maisonette split over the last three floors of this well maintained Victorian house located on one of the most prestigious addresses within South Kensington. The property enjoys stunning views over the communal gardens and the V&A.

Located close to South Kensington tube station (0.4 miles - Piccadilly, Circle and District lines) and 1.5 miles from Victoria mainline and Coach stations. Thurloe Square is a highly sought-after garden square close to South Kensington underground station. The square was developed in the 1820s, its houses mostly designed by George Basevi, a celebrated Victorian architect of the Gothic and Neoclassical styles.

Local schools include the French Lycee, Francis Holland, Garden House, Sussex House, Hill House, The Knightsbridge School and More House.

Council Tax Band: H  
Deposit: £10,800

**Asking price: £1,800**



020 7096 9476

contact@landstones.co.uk

Whilst every effort is made to ensure the accuracy of these details, it should be noted that the measurements are approximate only. Floorplans are for representation purposes only and prepared according to the RICS Code of Measuring Practice by our floorplan provider. Therefore, the layout of doors, windows and rooms are approximate and should be regarded as such by any prospective tenant.