



Lockton Street, W10

Lockton Street, W10

Landstones are proud to offer for sale this unique one-bedroom penthouse apartment with stunning wrap around terrace.

Set over the top floor of a fantastic purpose built development this apartment offers truly panoramic views of the London skyline. The fifth floor is accessed via a lift, bringing you up to this bright, light and airy apartment. As you enter the property you have a large modern bathroom with walk in shower. Next to this the generous sized double bedroom features floor to ceiling wardrobes with plenty of space for both clothes and additional storage. Two additional storage cupboards in the corridor also give room for the bits and bobs we all need to hide away

The show stopping open plan reception room is a tranquil place to relax, work from home, entertain guests or simple watch some TV. With huge doors opening out onto the expansive terrace this apartment is truly a must see to be believed.

The development also benefits from a communal garden area perfect for exercise, dog walking or keeping children occupied. The green open spaces of Avondale Park and Kensington Memorial Gardens can be easily accessed as well. For gym lovers both Anytime Fitness and Virgin active are within a short walk or jog.

Access to the Hammersmith and City tube line is moments away and the surrounding area has a plethora of pubs, bars and local supermarkets. Also, a short stroll down St Annes Road takes you to the local gem of Embassy Café, perfect for a weekend brunch.

The apartment is also just 8 minutes walk from the Westfield Shopping City with a Central line tube and Bus depot.

Council Tax Band: C (Kensington and Chelsea)

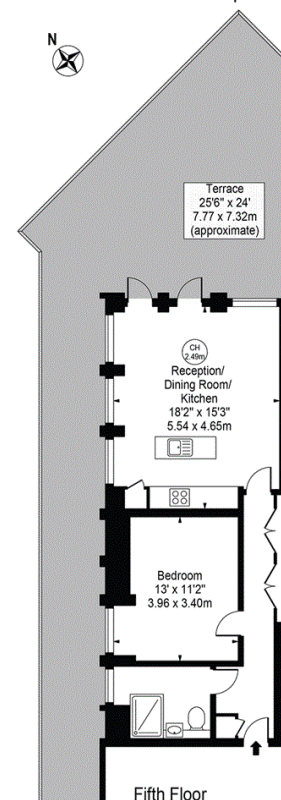
020 7096 9476

contact@landstones.co.uk



Packenhams House

Approx. Gross Internal Area 586 Sq Ft - 54.44 Sq M



Fifth Floor
For Illustration Purposes Only - Not To Scale

This floor plan should be used as a general outline for guidance only and does not constitute in whole or in part an offer or contract. Any intending purchaser or lessee should satisfy themselves by inspection, searches, enquiries and full survey as to the correctness of each statement. Any areas, measurements or distances quoted are approximate and should not be used to value a property or be the basis of any sale or let.

Whilst every effort is made to ensure the accuracy of these details, it should be noted that the measurements are approximate only. Floorplans are for representation purposes only and prepared according to the RICS Code of Measuring Practice by our floorplan provider. Therefore, the layout of doors, windows and rooms are approximate and should be regarded as such by any prospective purchaser. Any internal photographs are intended as a guide only and it should not be assumed that any of the furniture/fittings are included in any sale. Where shown, details of lease, ground rent and service charge are provided by the vendor and their accuracy cannot be guaranteed, as the information may not have been verified and further checks should be made either through your solicitor/conveyance. Where appliances, including central heating, are mentioned, it cannot be assumed that they are in working order, as they have not been tested. Please also note that wiring, plumbing and drains have not been checked.