



Brewster Gardens, W10

Brewster Gardens, W10

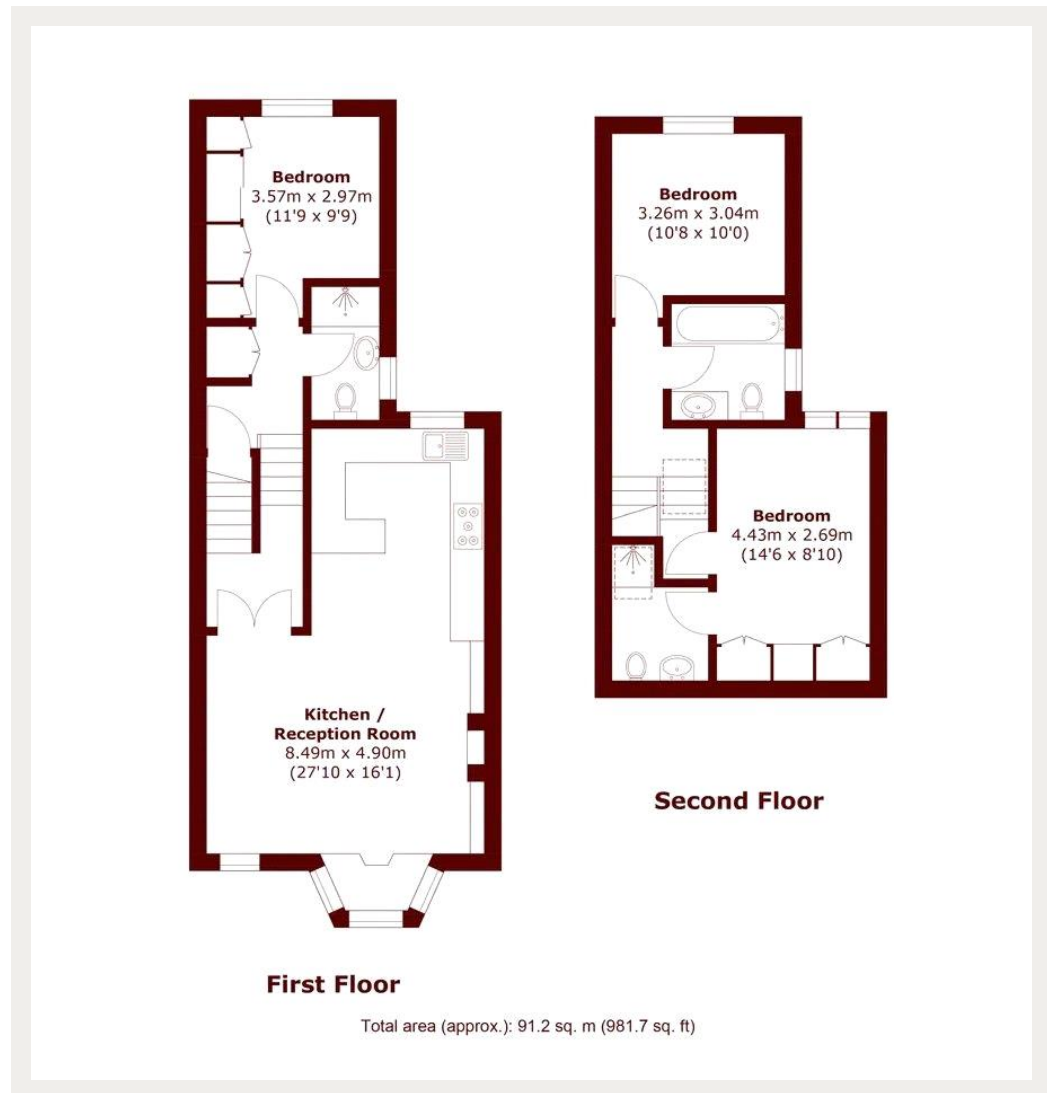
Offered on a Short-Let basis, a fantastic split level three bedroom maisonette, set over the first and second floors located on this quiet North Kensington Road.

Brewster Gardens is within walking distance of the shops, restaurants and transport links in and around North Kensington, Ladbroke Grove, Portobello Road and Golborne Road. The wide-open spaces of Little Scrubs and Wormwood Scrubs are just a stone's throw away. Westfield Shopping Centre is also within walking distance, as is White City underground station on the Central line.

Deposit: £6,500

Newly Refurbished, All Bills Inclusive, Short Let

Asking price: £1,500



020 7096 9476

contact@landstones.co.uk

Whilst every effort is made to ensure the accuracy of these details, it should be noted that the measurements are approximate only. Floorplans are for representation purposes only and prepared according to the RICS Code of Measuring Practice by our floorplan provider. Therefore, the layout of doors, windows and rooms are approximate and should be regarded as such by any prospective tenant.