



Knightsbridge, SW1X

Knightsbridge, SW1X

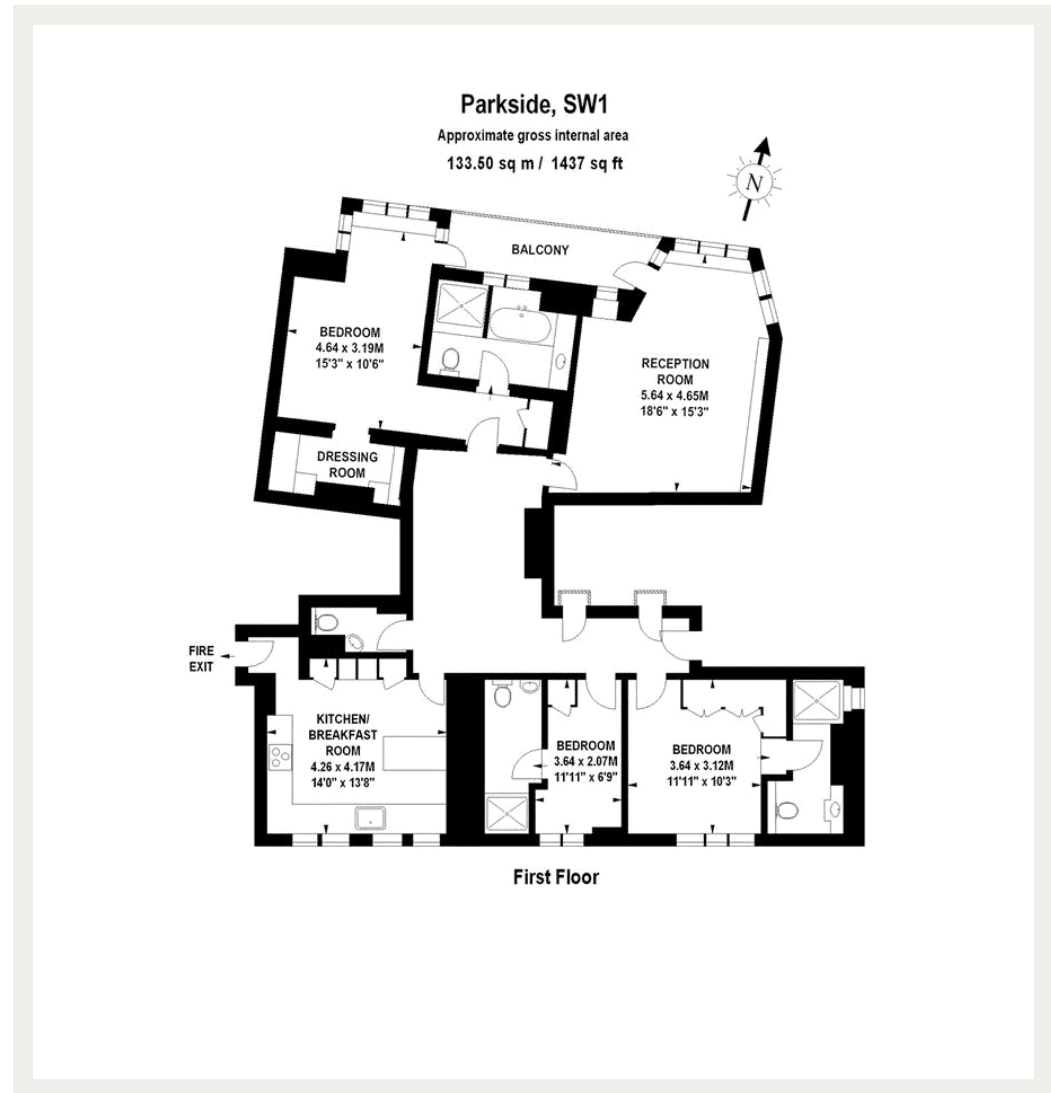
A vast three-bedroom lateral apartment set on the first floor of this well maintained building (with lift) and direct park views.

Located in the heart of Knightsbridge close to the international designer shops and restaurants of Sloane Street and the lovely boutiques on Beauchamp Place, Harvey Nichols and the famous Harrods. Hyde Park is also moments away.

Council Tax Band: H
Deposit: £14,100

Direct Hyde Park Views, Porter

Asking price: £2,350



020 7096 9476

contact@landstones.co.uk

Whilst every effort is made to ensure the accuracy of these details, it should be noted that the measurements are approximate only. Floorplans are for representation purposes only and prepared according to the RICS Code of Measuring Practice by our floorplan provider. Therefore, the layout of doors, windows and rooms are approximate and should be regarded as such by any prospective tenant.