



Holland Park Avenue, W11

Holland Park Avenue, W11

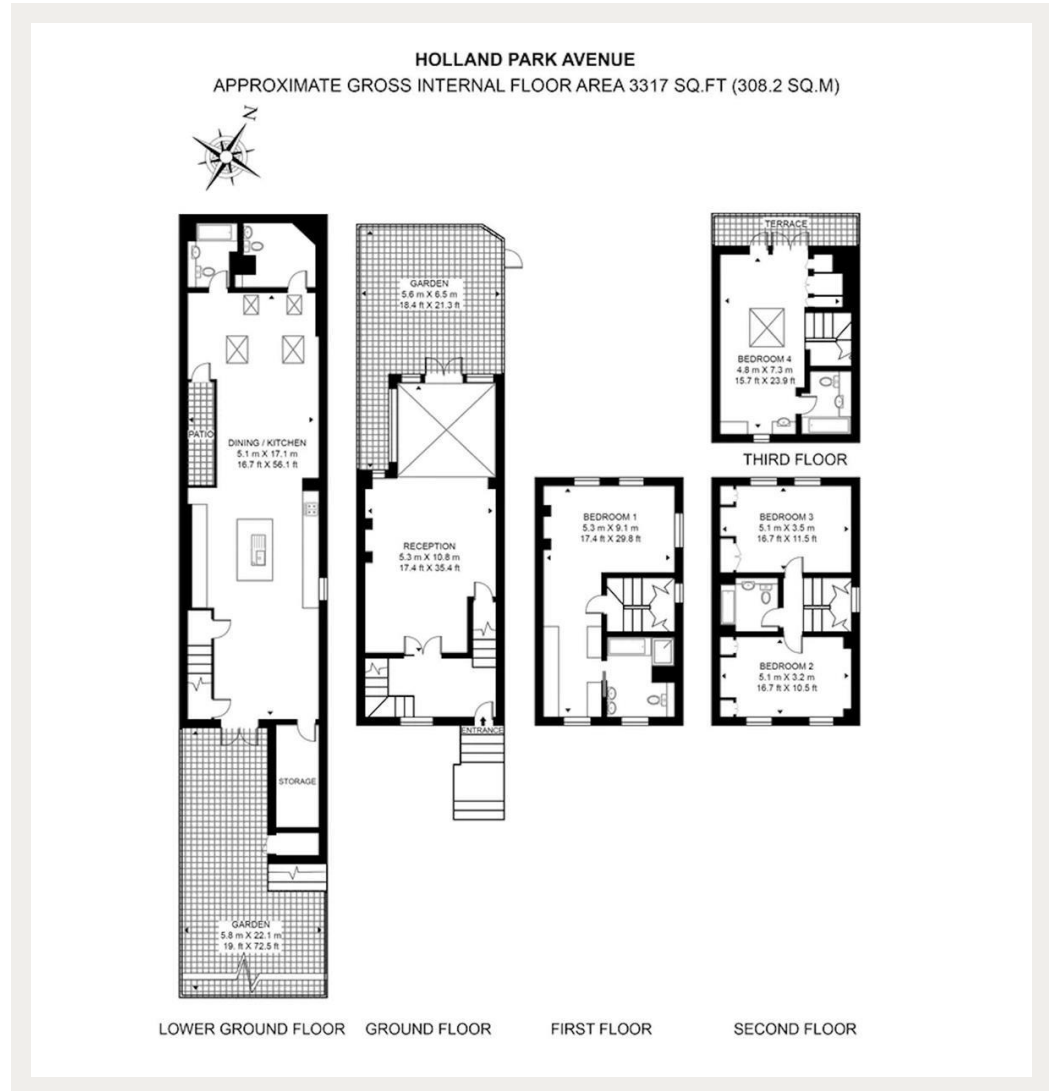
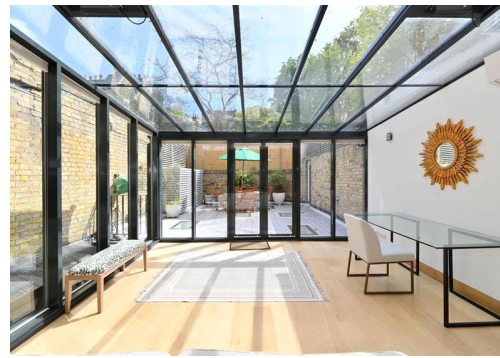
Offered on a Short Let basis, a spectacular semi detached four bedroom family home with off street parking in the heart of Holland Park.

Holland Park Avenue is conveniently positioned with Holland Park Underground Station (Central Line) being only a 0.1 mile stroll away and the green open spaces of Holland Park with its stunning Japanese gardens, also in close proximity.

Council Tax Band: H
Deposit: £32,000

Air Conditioning, Pet Friendly, Private Parking, All Bills Inclusive, Short Let

Asking price: £7,500



020 7096 9476

contact@landstones.co.uk

Whilst every effort is made to ensure the accuracy of these details, it should be noted that the measurements are approximate only. Floorplans are for representation purposes only and prepared according to the RICS Code of Measuring Practice by our floorplan provider. Therefore, the layout of doors, windows and rooms are approximate and should be regarded as such by any prospective tenant.