



Eardley Crescent, SW5

Eardley Crescent, SW5

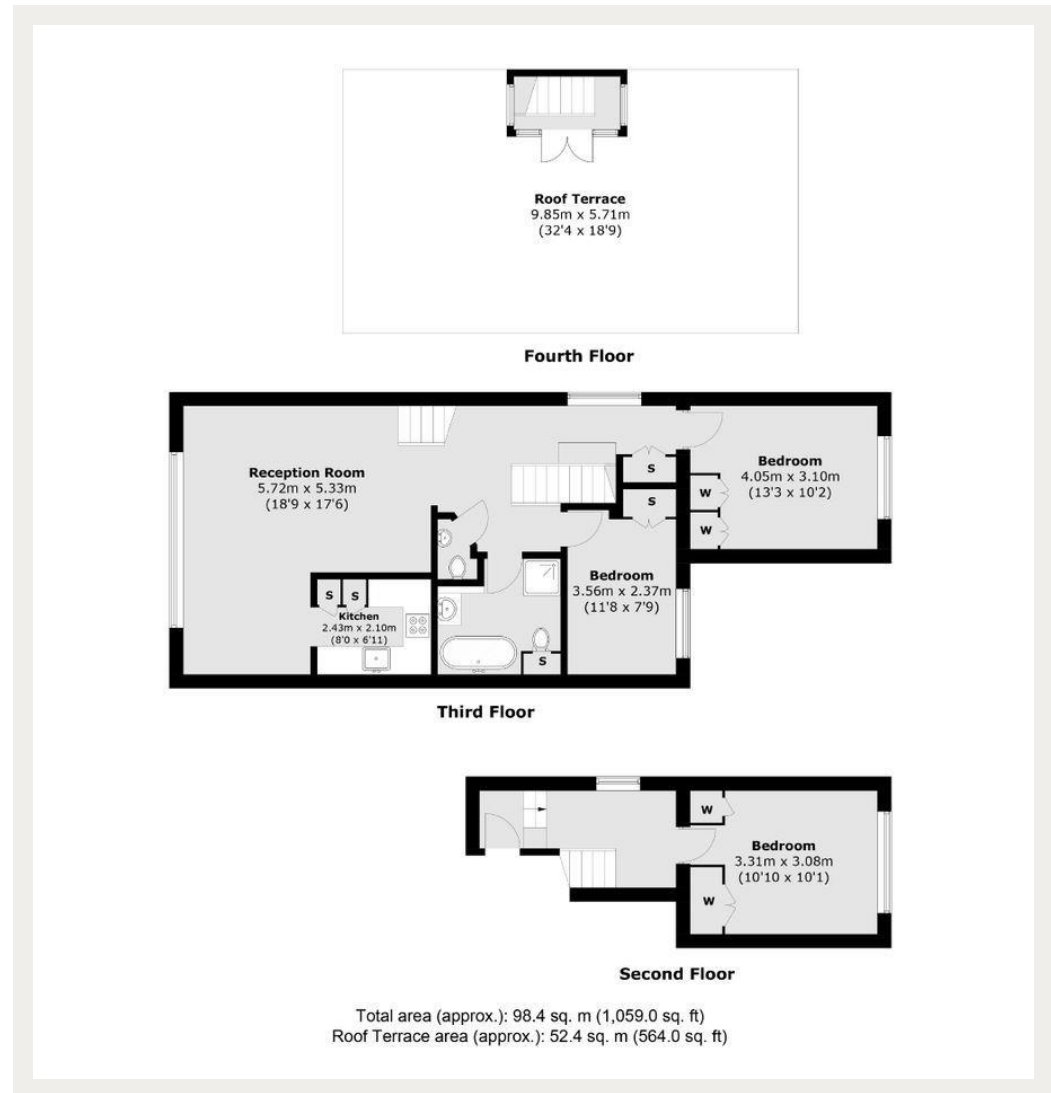
A bright and spacious three double bedroom split level apartment with access to its own breath-taking private panoramic roof terrace.

Located on a quiet residential road, Eardley Crescent is ideally situated between West Brompton and Earl's Court tube stations, also moments away from the many shops, bars and restaurants of Earl's Court and Chelsea.

Council Tax Band: F (Kensington and Chelsea)
Deposit: £6,900

Private Rooftop, Three Double Bedrooms, Top Floor Flat, Pet Friendly

Asking price: £1,150



020 7096 9476

contact@landstones.co.uk

Whilst every effort is made to ensure the accuracy of these details, it should be noted that the measurements are approximate only. Floorplans are for representation purposes only and prepared according to the RICS Code of Measuring Practice by our floorplan provider. Therefore, the layout of doors, windows and rooms are approximate and should be regarded as such by any prospective tenant.