



Wycombe Square, W8

# Wycombe Square, W8

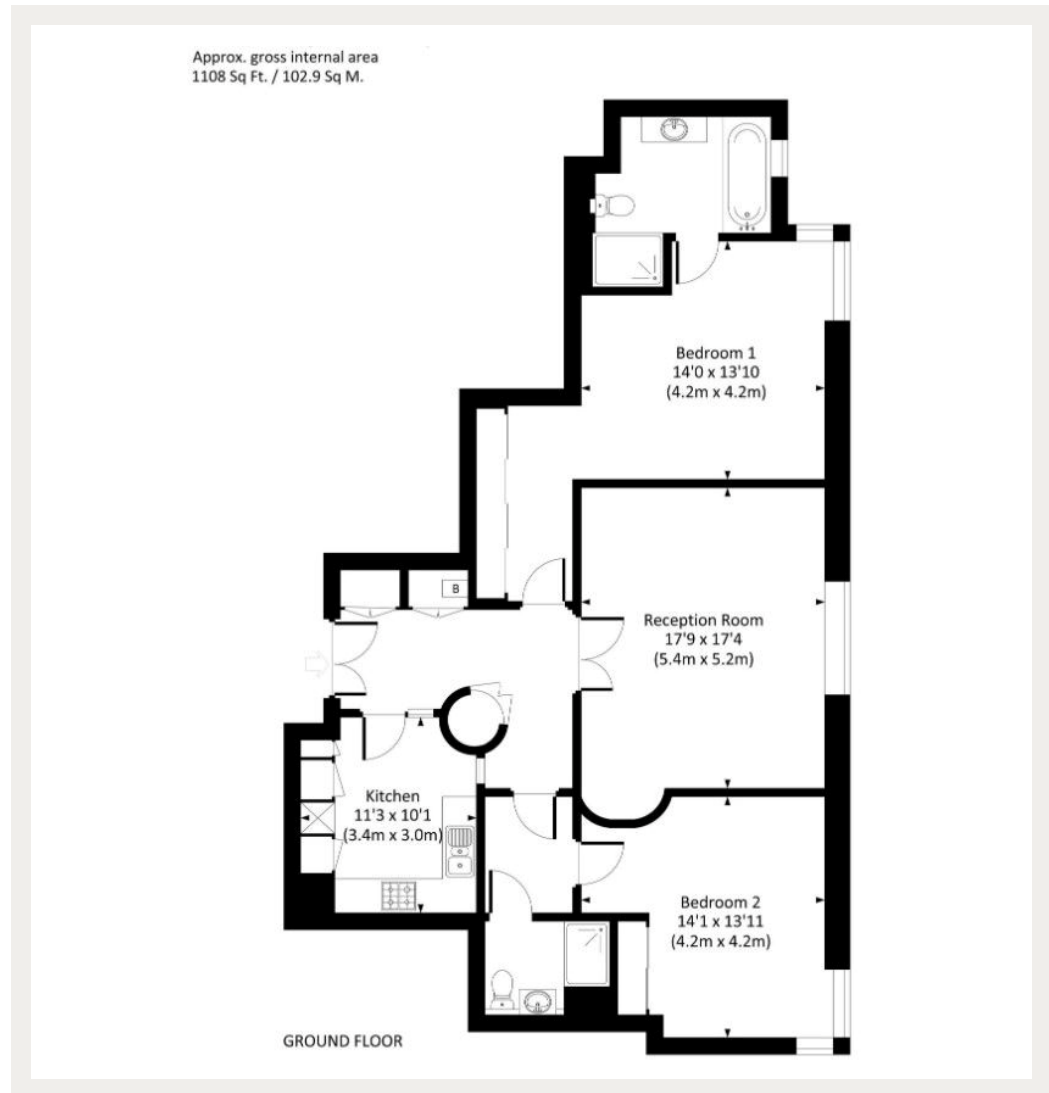
A brand new refurbished and well presented lateral apartment within this sought after and exclusive development located between Kensington High Street and Notting Hill Gate.

Wycombe Square is nestled in the heart of Kensington, located just off Campden Hill Road, transporting you outside exclusive boutiques and award winning restaurants and bars of Notting Hill Gate and High Street Kensington. The open spaces of the iconic Holland Park and Kensington Gardens are just a short distance away.

Council Tax Band: H  
Deposit: £10,200

24/7 Concierge, Air-Conditioning, Allocated Parking, Communal Garden, Outdoor Space, Underfloor Heating

**Asking price: £1,700**



020 7096 9476

contact@landstones.co.uk

Whilst every effort is made to ensure the accuracy of these details, it should be noted that the measurements are approximate only. Floorplans are for representation purposes only and prepared according to the RICS Code of Measuring Practice by our floorplan provider. Therefore, the layout of doors, windows and rooms are approximate and should be regarded as such by any prospective tenant.