



Gloucester Place, NW1

Gloucester Place, NW1

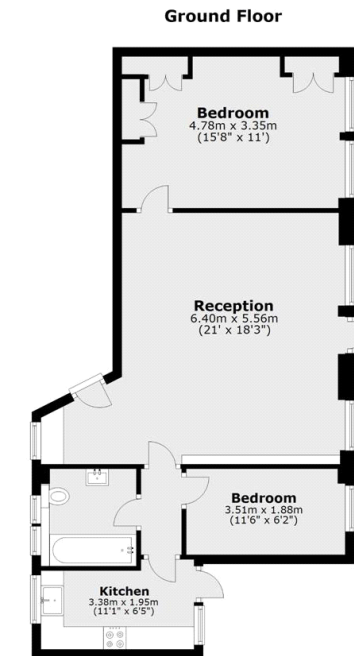
A spacious two bedroom apartment set in a well maintained Art Deco portered block in the heart of Marylebone and moments' walk to Baker Street and Marylebone Station.

The building, once the home of Rolling Stones' drummer Charlie Watts, is located in the midst of many highlights of Marylebone, including fantastic restaurants, pubs and bars as well as a range of high end, boutique shops on Marylebone High Street. Just moments from the open spaces of Regents Park and within easy walking distance of Baker Street underground station (Jubilee, Metropolitan, Circle, Bakerloo, Hammersmith & City lines).

Council Tax Band: D
Deposit: £3,750

24/7 Porter, Communal Terrace, Heating & Hot Water Included, Wooden Floors

Asking price: £750



Total area: approx. 67.0 sq. metres (721.2 sq. feet)

020 7096 9476

contact@landstones.co.uk

Whilst every effort is made to ensure the accuracy of these details, it should be noted that the measurements are approximate only. Floorplans are for representation purposes only and prepared according to the RICS Code of Measuring Practice by our floorplan provider. Therefore, the layout of doors, windows and rooms are approximate and should be regarded as such by any prospective tenant.